

***STXi*Motion**
Motion. Optimized.

Our Journey in Motion

STXiMotion

2019

Emerged from Servotronix with over 30 years of experience, STXI was established as an independent global motion control provider.

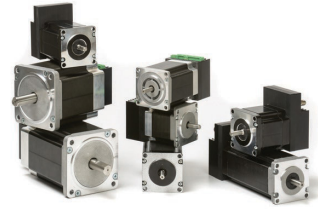
2020



1st STXI's-own all-in-one motion system for the rapidly growing intralogistics and mobile robotics market, matching market demands following Covid-19.

2021

Setup of own production and assembly facility for integrated drive motors at high volume for global customers.



2022

Successful implementation and ramp-up production of STXI's new products with several leading AGV/AMR manufacturers.

2023

Addition of the new-gen TIM integrated servo motors series.



2024

Functional safety + Engineering + Smart actuation + Mix & match = a Motion Powerhouse: combining unmatched industry know-how with an innovative approach for designing market-driven optimized motion solutions.

Empowering Innovation Through Motion

We enable our customers to focus on their core products with confidence and ease—minus the motion headaches.

Combining unmatched industry expertise with innovative technologies, we deliver advanced, integrated motion control and servo solutions. Our comprehensive product lines - including servo drives, gear motors, and integrated systems - are optimized and engineered to meet the unique needs of diverse industries, from mobile robotics to electronics assembly, printing, textile manufacturing, and medical equipment. Our goal is to empower machine builders and industrial automation providers to optimize their machine designs, enhance efficiency, and gain a competitive edge in the rapidly evolving automation landscape.

Market-Driven Motion Solutions

Low Voltage Servo Drives



ZED 15

Low Voltage Servo Drives
Current (cont./peak):
12/40 A rms
Voltage: 24 VDC



ZED 25, 30

Low Voltage Servo Drives
Current (cont./peak):
20/70 A rms
Voltage: 24/48 VDC



ZED 65

Low Voltage Servo Drives
Current (cont./peak):
45/135 A rms
Voltage: 48 VDC



CDHD2 LV

Low Voltage Servo Drives
Current (cont./peak):
3/30 A rms
Voltage: 20-90 VDC



Rayon

Embedded Modules
Current (cont./peak):
12/40 A rms
Voltage: 24 VDC



Rayon

Harsh Environment Drives
Current (cont./peak):
55/750 A rms
Voltage: 24-48 VDC



smartPX

Multi Axis Drive
Supports up to 6 axes
Input voltage (VAC):
110/220, 1/3 phase



CDHD2

Medium & High Voltage Servo Drives
Current (cont./peak):
1.5-138 A rms
Voltage: 120/240 VAC ;
400/480 VAC

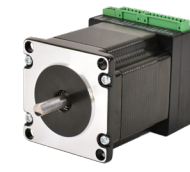
Medium & High Voltage Servo Drives

Integrated Motors



TIM

Integrated Servo Motors
Power: 200 – 800 W
Rated torque: 0.64-2.55 Nm
Rated speed: 3000 rpm
Voltage: 24/48 VDC



stepIM

Integrated Stepper Motors
Nema 17,23,34. Stack 1-3
Holding torque: 0.35-7.7 Nm
Rated speed: 1000 rpm
Voltage: 14-75 VDC

Servo Motors



MOT-PM

Low Voltage Servo Motors
Power: 50 W – 3 kW
Rated torque: 0.16-9.55 Nm
Rated speed: 3000-3200 rpm
Voltage: 24/48 VDC



PRHD2

Medium and High Voltage Servo Motors
Power: 50 W – 7.5 kW
Rated torque: 0.16-48 Nm
Rated speed: 3000 rpm
Voltage: 230/400 VAC

Gear Motors



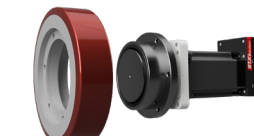
TIM-SG

Integrated Gear Motors
Power: 200 – 800 W
Rated torque: 6.4-64 Nm
Rated speed: 75-3000 rpm
Voltage: 24/48 VDC



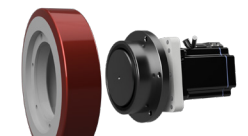
MOT-SG

Gear Motors
Power: 200 – 800 W
Rated torque: 6.4-64 Nm
Rated speed: 75-3000 rpm
Voltage: 24/48 VDC



TIM-GT

Wheel Hub Integrated Gear Motors
Power: 200 – 800 W
Rated torque: 5.3-45 Nm
Rated speed: 133-3000 rpm
Voltage: 24/48 VDC



MOT-GM

Wheel Hub Gear Motors
Power: 200 – 3 kW
Rated torque: 5.3-36 Nm
Rated speed: 151-3000 rpm
Voltage: 24/48 VDC

Wheel – Hub Gear Motors

In Perfect Motion

Through our dominant partnerships, we are committed to creating innovative systems and solutions that are perfectly paired with renowned industry benchmark products of leading motion manufacturers.



Motion. Optimized.

Cabinet-Free Motion.

Optimal Efficiency.

Our extensive line of integrated drive-motors for decentralized machine architecture enhances machine performance while reducing overall production costs. Designed for maximum efficiency, our integrated stepper and servo motors allow machine builders to gain design flexibility and machine modularity, while also offering shorter build cycles and a reduced footprint.

1 Modular Machine Design.

Add or remove modules easily.

2 Precise Movement Technology.

Replacing old technologies (pneumatic, DC).

3 More Design Freedom.

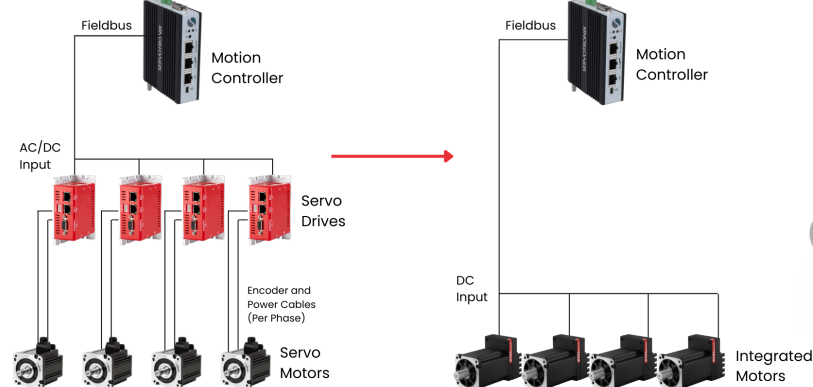
No constraints of a bulky cabinet.

4 Trimmed Overall Cost.

Shorter built-time.
Fewer components.
Less maintenance.
Trim overall costs.

From Centralized to Decentralized

Motion Architecture



Motion. Optimized.

Solutions that Drive Our Customers Forward

Edgebanding Machines

stepIM integrated closed-loop steppers replaced DC motors in one of the world's leading manufacturers of edgebanding machines in the woodworking and furniture industry. The edgebanders, deploying 12-30 axes each, now achieve a higher speed at an improved cost-efficiency. The integrated motors were designed to be fully compatible with the existing machine, including a fitted heatsink and connectors design, reducing the build cycle and maintenance.

Higher speed.
Full compatibility.



Improved accuracy.
Shorter production time.

Dynamic Checkweighers

stepIM integrated closed-loop steppers fully removed the control cabinets and reduced the machine's overall size, replacing large asynchronous motors. The client was able to significantly improve the machine's velocity accuracy and overall efficiency while shortening the production time, simplifying the build cycle and minimizing the machine's footprint due to fewer cables and components.



BIZERBA

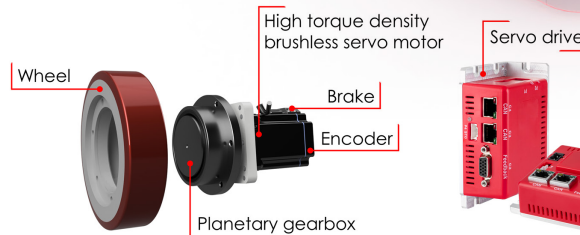
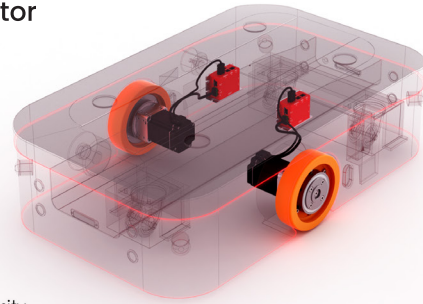
AGV/AMR Drive System.

Simply Smarter.

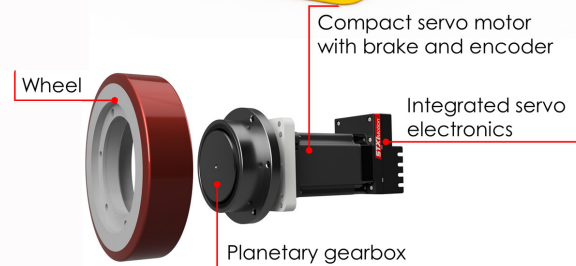
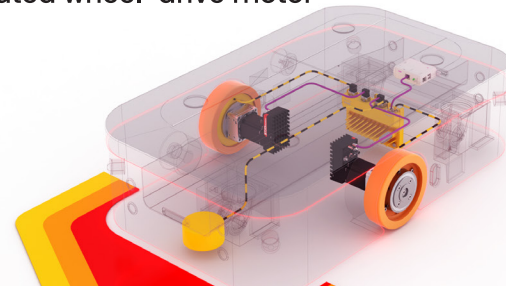
Safe Motion Using A Standard Incremental Encoder
According to ISO 3691-4, PL d

Our industry-leading mobile wheel-drive system. Carefully designed all-in-one, ready-to-use solution. Optimized for the requirements of automated guided vehicles and autonomous mobile robots. Includes a brushless servo motor with a planetary gearbox, a spring-loaded brake, an encoder, and the servSD servo drive - all wrapped up in one compact, robust package.

Compact drive and gearmotor



Integrated wheel-drive motor



1

Compact.

Integrated design simplifies cabling and leaves more space for other components.

2

Robust Design.

Strong output bearings and a shock and vibration proof servo system.

3

Safe Operation.

STO function and connectivity to PLC or modular safety controller.

4

Smooth Running.

Accurate speed and position control at extremely low/high speed levels.

5

Low Energy Consumption.

Low energy consumption minimizes the recharging cycle and increases the mobility range.

Solutions that Drive Our Customers Forward

Goods-to-Person Robots

Decentralized motion solutions for the traction and auxiliary axes of both lift and cart robots, used in goods-to-person order fulfillment. The specific design of the mechanical interfaces facilitated a seamless integration process.

In addition, the robust wheel-drive system is tolerant to the high shock and vibration caused when driving over bumps and uneven flooring.

Decentral architecture and durability



Compact + robust =
The perfect match.

Mobile Transport Robots

Sturdy wheel-drive motion system with high power density. Suitable for operation in harsh environments and on rough floor surfaces. The optimized servo motor with planetary gear enables a high starting torque and smooth operation over a wide speed range.



SAFLOG

Engineering. Made better.

With unmatched industry know-how and over 35 years of experience using the most innovative technologies, STXI offers smart, flexible, and cost-effective motion solutions, precisely designed for peak performance, seamless integration and optimal efficiency.

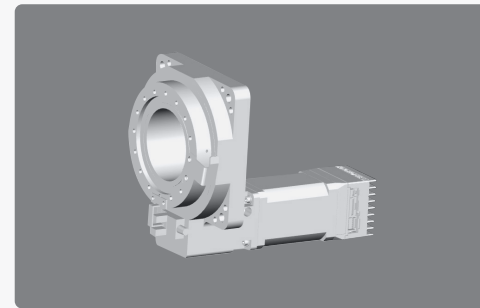
Smart Actuation

An end-to-end solution, providing a complete integrated axis. Combining integrated motors, a gearbox or actuator, and a brake with one part number and one ownership, creating a fully-functional smart actuation solution.

Custom Electronics

Combining extensive knowhow and field-proven software and hardware building blocks, we provide fast and accurate development of the ideal solution for your motion challenges.

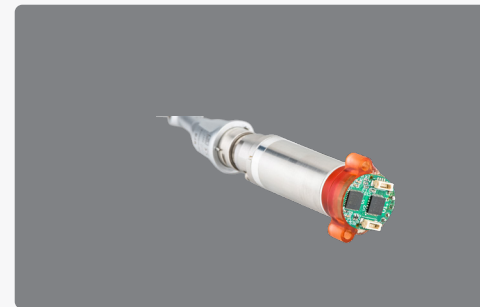
From minor modifications to full customization, we integrate any peripheral functionalities required to simplify and optimize your design.



Integrated Stepper Gearmotor



Integrated Stepper Motor with Linear Actuator



Miniature Integrated Servo Motor (16-32 mm)



Integrated Servo Motor with Rotary Actuator

Your ideal motion partner.

01

Your Partner from Day 1

Supporting our customers in converting their motion needs to optimized product specifications.

02

Market-Driven Solutions

Product development based on market forecasts, creating segment-optimized solutions.

03

Industry Know-How

Unmatched industry know-how to simplify and optimize your design.

04

Extensive Global Network

A deep-rooted global network of partners puts us at the forefront of the global industry.

05

Sourcing Capabilities

Strategic partnerships with key component providers to ensure alternating resources when needed.

06

Fast Time to Market

Fast modification and adaptation to our customers' needs based on field-proven software and hardware building blocks.

07

Built to Scale

Flexible and localized production lines allow our customers to scale with ease.

08

Product Lifetime Support

Guaranteed lifetime support and production of your product, making sure your machine can be manufactured for decades to come.

Trusted motion partner of

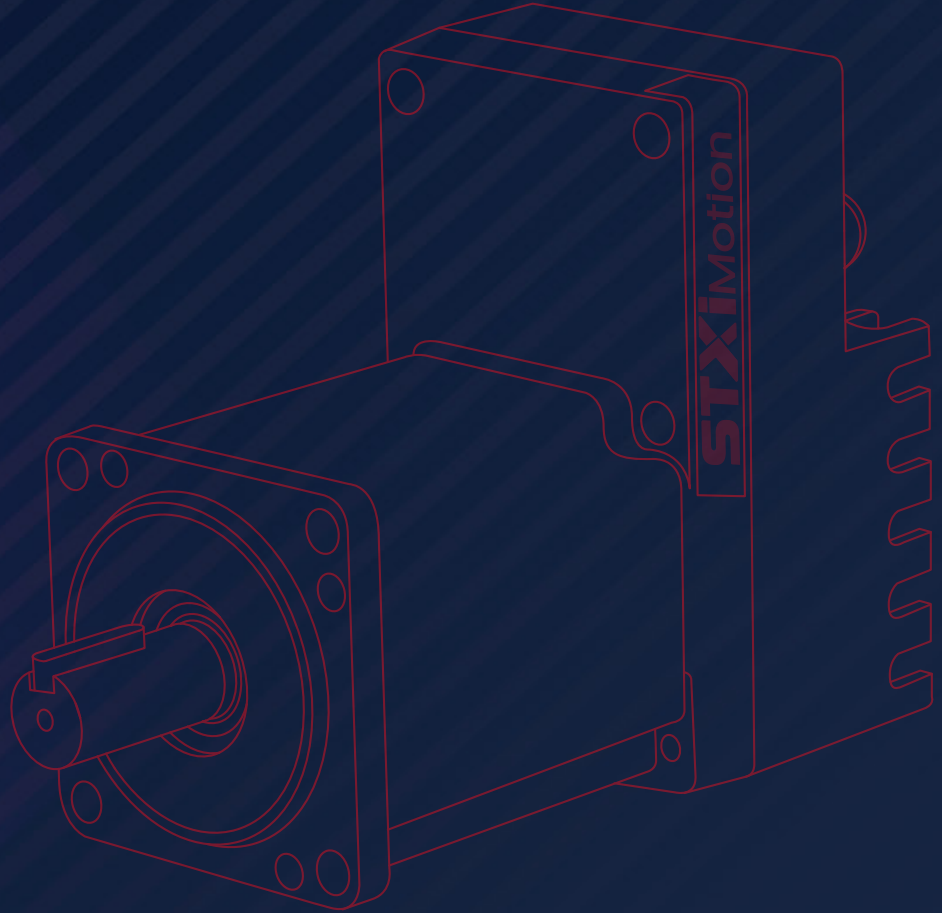


STXiMotion

Motion. Optimized.



MEET TIM >



contact@stxim.com
stxim.com

Headquarters

STXI Motion Ltd.
21C Yagia Kapayim St.
Petach Tikva
4913020 Israel

+972-74-7776899

North America

STXI Motion Inc.
27475 Ferry Road.
Warrenville, IL. 60555
USA

+1-630-408-7033

Europe

STXI Motion GmbH
Dülkener Straße 5
41334 Nettetal
Germany

+49-2153-1299950

Korea

STXI Motion Korea Inc.
BIZ Tower # 1315,57-2 Heungan-daero
427 beon-gil Dongan-gu, Anyang-si,
Gyeonggi-do (14059) South Korea

+82-31-8068-5604