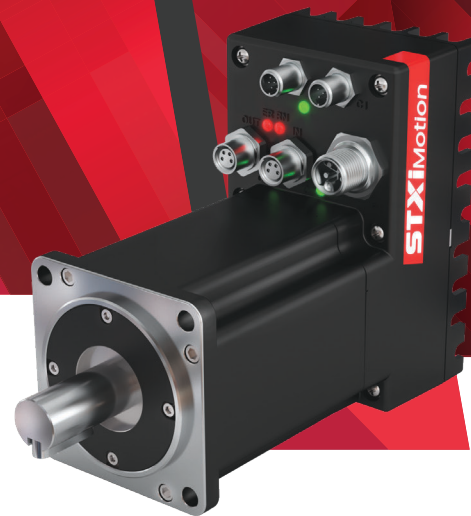


TiM Integrated Servo Motors

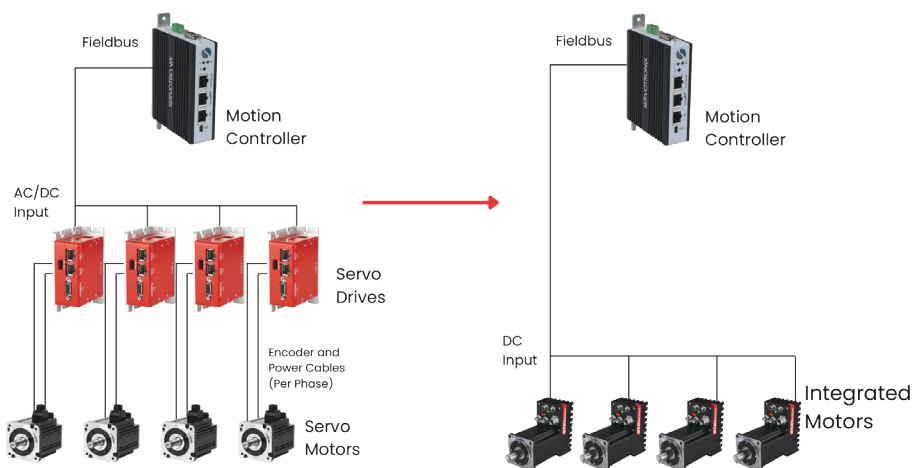
TiM integrated servo motor is a cost effective and flexible solution, ideal for applications with limited control cabinet space and a decentral machine architecture. With its high power density and compact size, TiM enables space-saving machine designs and ultimately cabinet-less machines.

Integrated components reduce cost, space and machine complexity

In a decentral machine architecture, wiring and assembly time can be reduced thus enabling significant cost savings for machine builders. Integrated motors that combine the drive, control and power electronics also free up space and reduce the heat generated inside the cabinet. The TiM integrated servo motor comes with I/Os for easy wiring of distributed signals as well as CANopen and EtherCAT communication ports.



From Centralized to Decentralized Motion Architecture



Supporting multiple types of motor feedback

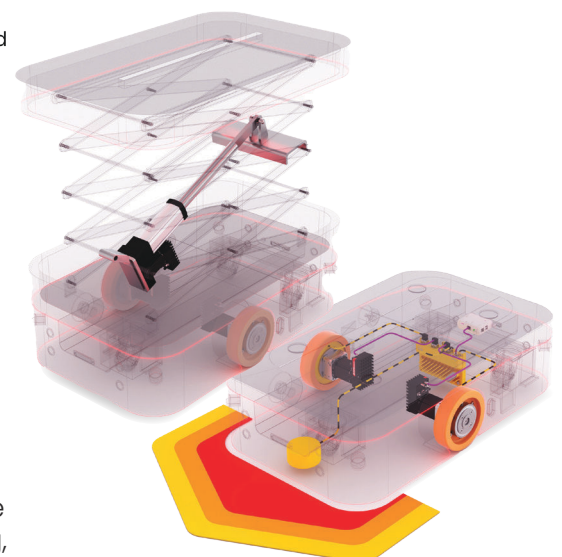
TiM motors support absolute single turn and absolute multi turn encoders. With these feedbacks and STO functional safety TiM meet the full range of resolution and safe operation requirements of diverse applications.

Connectivity to safety control

The STO SIL3, Cat 3, PL e safety function can be connected to a master PLC / motion controller and / or to a safety controller. Two additional non-safe encoders can be connected from the motor to the safety controller (e.g. Flexi Mobile from SICK) for safe motion monitoring, minimizing the complexity of the AGV design.

Key benefits

- Frame size: 60 - 80 mm
- 200 to 800 W rated output power
- 48 VDC bus voltage
- Fieldbus: CANopen, EtherCAT
- Feedback types: Absolute single turn, absolute multi turn
- Optional holding brake
- 4 digital inputs, 2 digital outputs
- Front and back connector mounting
- IP54 protection class (IP65 optional)
- STO functional safety (SIL 3/PL e)
- CE and cUL certifications



Rating and dimensions

Model	Flange Size (mm)	Length (with brake) (mm)	Voltage (VDC)	Power (W)	Rated Current (Arms)	Rated Torque (Nm)	Rated Speed (rpm)	Max. Speed (rpm)
ISM 60S	60	102 (119)	48	200	6.5	0.64	3,000	5,400
ISM 60M	60	102 (119)	48	400	12.0	1.27	3,000	5,000
ISM 80S	80	113 (143)	48	480	14.6	1.53	3,000	5,100
ISM 80M	80	130 (160)	48	800	22.6	2.55	3,000	4,800

Communication:

CANopen
EtherCAT

Motor feedback:

Absolut single turn
Absolut multi turn

Digital I/Os:

4 x Input
2 x Output

Ordering information

	IS	M	-	60S	4	30	3	1	E	1	0	00
Integrated Servo Motor												
Type												
Servo Motor												
Frame Size and Length												
60S	Flange 60 mm Short (200 W)											
60M	Flange 60 mm Medium (400 W)											
80S	Flange 80 mm Short (480 W)											
80M	Flange 80 mm Medium (800 W)											
DC Bus Voltage												
4	48 VDC											
Rated Speed												
3	3000											
Shaft												
3	Keyway											
4	Full round											
Connector and Protection Class												
1	Front mounting IP 54											
5	Back mounting IP 54											
Communication												
CO	CANopen											
EC	EtherCAT											
Feedback												
2	Absolute Single Turn											
4	Absolute Multiturn											
Brake												
0	No brake											
1	With brake											
Option												
00												



TIM_Flyer_2023_EN_V3